

# HITACHI

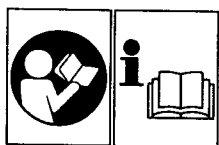
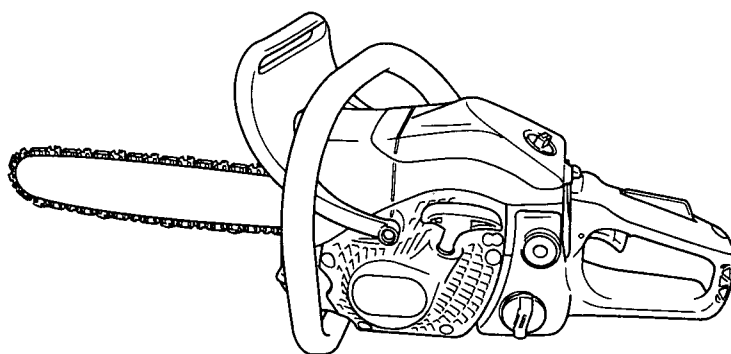
---

**Chain Saw**  
**Kettensäge**  
**Tronçonneuse**  
**Motosega**  
**Motor kettingzaag**  
**Motosierra**  
**Motoserra**

---

**CS 33EB**

---

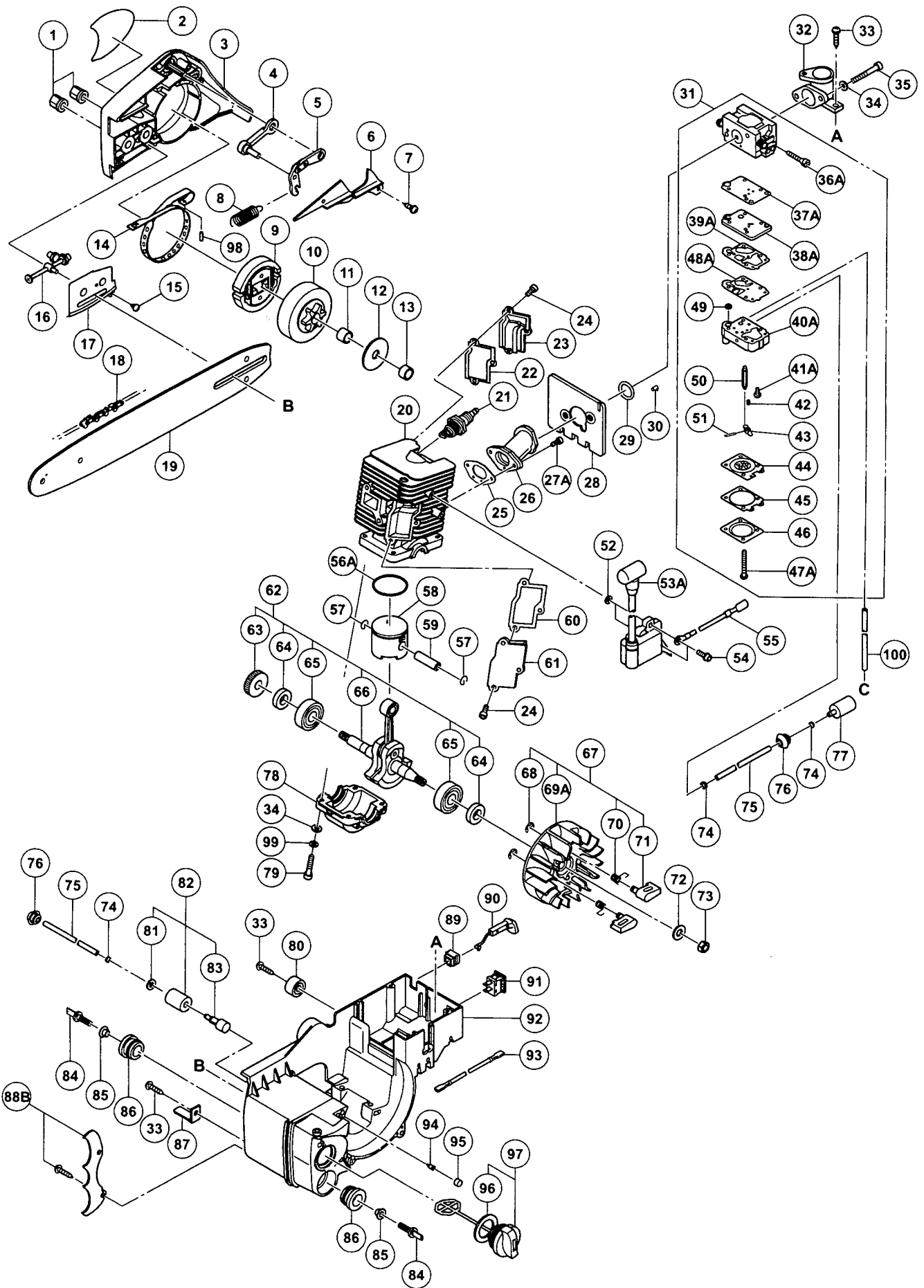


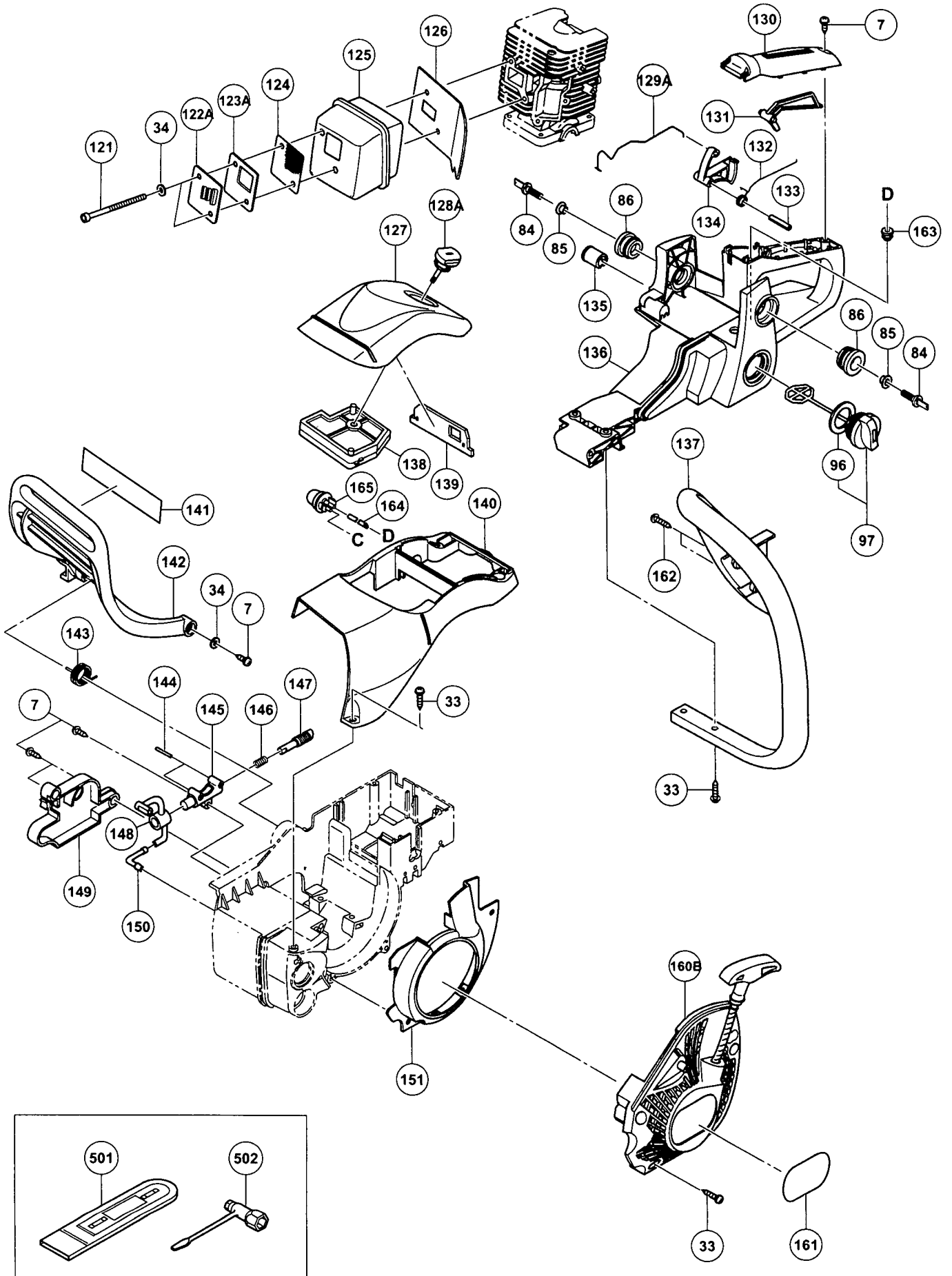
Read through carefully and understand these instructions before use.  
Diese Anleitung vor Benutzung des Werkzeugs sorgfältig durchlesen und verstehen.  
Lire soigneusement et bien assimiler ces instructions avant usage.  
Prima dell'uso leggere attentamente e comprendere queste istruzioni.  
Deze gebruiksaanwijzing s.v.p. voor gebruik zorgvuldig doorlezen.  
Leer cuidadosamente y comprender estas instrucciones antes del uso.  
Antes de usar, leia com cuidado para assimilar estas instruções.

---

**Handling instructions**  
**Bedienungsanleitung**  
**Mode d'emploi**  
**Istruzioni per l'uso**  
**Gebruiksaanwijzing**  
**Instrucciones de manejo**  
**Instruções de uso**

**Hitachi Koki**





Item No.	Part Name	Q'TY
1	CHAIN BAR CLAMP NUT	2
2	NAME PLATE	1
3	SIDE COVER SUB	1
4	BRAKE SUPPORT	1
5	BRAKE LINK	1
6	BRAKE LINK COVER	1
7	TAPPING SCREW (W/FLANGE) D4 x 16	7
8	BRAKE SPRING	1
9	CLUTCH	1
10	CLUTCH HOUSING	1
11	NEEDLE BEARING (D)	1
12	CLUTCH WASHER	1
13	CRANK SHAFT COLLAR	1
14	BRAKE BAND	1
15	TAPPING SCREW D3 x 8	2
16	CHAIN PULLER	1
17	GUIDE PLATE	1
18	SAW CHAIN	1
19	CHAIN BAR	1
20	CYLINDER	1
21	SPARK PLUG	1
22	COVER PACKING (B)	1
23	SCAVENGING COVER (B)	1
24	SEAL LOCK HEX. SOCKET HD. BOLT M4 x 8	6
25	INTAKE PACKING	1
26	INTAKE	1
27A	SEAL LOCK HEX. SOCKET HD. BOLT M4 x 10	2
28	CARBURETOR INSULATOR	1
29	O-RING	1
30	PULSE GUIDE	1
31	CARBURETOR ASS'Y	1
32	CLEANER SUPPORT	1
33	TAPPING SCREW (W/FLANGE) D5 x 20	12
34	WASHER 5	9
35	HEX. SOCKET HD. BOLT M5	2
36A	IDLE ADJUSTING SCREW	1
37A	PASSAGE GASKET	1
38A	PASSAGE PLATE	1
39A	PUMP GASKET	1
40A	PUMP BODY	1
41A	HINGE PIN SET SCREW	1
42	METERING LEVER SPRING	1
43	CONTROL LEVER	1
44	METERING DIAPHRAGM COMP.	1
45	DIAPHRAGM PACKING	1
46	DIAPHRAGM COVER	1
47A	SET SCREW	4
48A	PUMP DIAPHRAGM	1
49	INLET SCREEN	1
50	NEEDLE VALVE	1
51	HINGE PIN	1
52	WASHER	2
53A	IGNITION COIL (FL33F)	1
54	HEX. SOCKET HD. BOLT (W/FLANGE) M4 x 18	2
55	CORD (B)	1
56A	PISTON RING (XR1-1856)	1
57	CIR CLIP	2
58	PISTON	1
59	PISTON PIN	1
60	COVER PACKING (A)	1
61	SCAVENGING COVER (A)	1
62	CRANK WORM ASS'Y	1
63	WORM	1
64	OIL SEAL	2
65	BALL BEARING	2
66	CRANK SHAFT	1
67	MAGNETO ROTOR ASS'Y	1
68	RETAINING RING D4	2
69A	MAGNETO ROTOR (FLZ33C)	1
70	STARTER PAWL SPRING	2

Item No.	Part Name	Q'TY
71	STARTER PAWL	2
72	BOLT WASHER D8	1
73	FLYWHEEL NUT	1
74	CLIP	3
75	FUEL PIPE (A)	2
76	FUEL GROMMET (A)	2
77	PUMP FILTER BODY	1
78	CRANK CASE	1
79	SEAL LOCK HEX. SOCKET HD. BOLT M5	4
80	DAMPER (B)	1
81	BOLT WASHER D5	1
82	OIL FILTER BODY ASS'Y	1
83	OIL FILTER BODY	1
84	DAMPER SET BOLT	4
85	DISTANCE PIECE (B)	4
86	DAMPER (A)	4
87	CHAIN CATCHER	1
88B	SPIKE SET	1
89	CHOKE ROD RUBBER	1
90	CHOKE BUTTON	1
91	STOP SWITCH	1
92	ENGINE CASE	1
93	CORD (A)	1
94	AIR VENT VALVE (B)	1
95	AIR VENT SPONGE	1
96	TANK CAP PACKING	2
97	FUEL TANK CAP ASS'Y	2
98	NEEDLE ROLLER D3	1
99	SPRING WASHER M5	4
100	FUEL PIPE	1
121	SEAL LOCK HEX. SOCKET HD. BOLT M5 x 75	2
122A	EXHAUST PIPE	1
123A	GAUZE FIXING PLATE	1
124	MUFFLER GAUZE	1
125	MUFFLER	1
126	MUFFLER PACKING	1
127	CLEANER COVER	1
128A	CLEANER KNOB	1
129A	THLOTTLE ROD	1
130	REAR HANDLE GRIP	1
131	TRIGGER LOCKOUT	1
132	THROTTLE LEVER SPRING	1
133	SPRING PIN 5 x 25	1
134	THROTTLE LEVER	1
135	INNER CAP	1
136	REAR HANDLE	1
137	FRONT HANDLE	1
138	CLEANER ELEMENT	1
139	SHUTTER PLATE	1
140	CYLINDER COVER	1
141	CAUTION LABEL	1
142	BRAKE HANDLE	1
143	BRAKE LEVER SPRING	1
144	NEEDLE ROLLER 2.5 x 9.8	2
145	PUMP CASE	1
146	PUMP GEAR SPRING	1
147	PUMP GEAR	1
148	OIL PIPE	1
149	PUMP COVER	1
150	PIPE JOINT	1
151	AIR DEFLECTOR	1
160B	RECOIL STARTER	1
161	HITACHI LABEL	1
162	TAPPING SCREW (W/FLANGE) D5 x 25	2
163	RETURN GROMMET	1
164	FUEL PIPE	1
165	PRIMING PUMP COMP.	1
501	CHAIN COVER	1
502	COMBI BOX SPANNER	1